

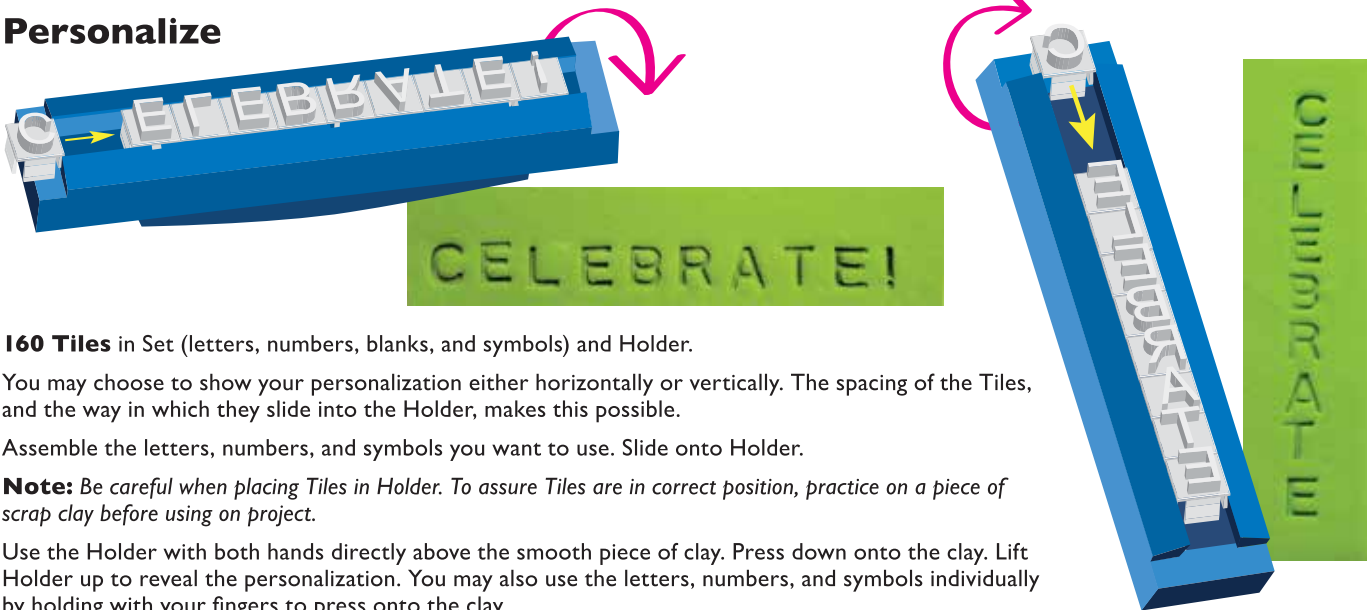


Clay Embossing Set Instructions

Walnut Hollow® • Dodgeville, WI 53533 • walnuthollow.com

Emboss any type of clay to give more interest to your projects. It's easy to get great results for personalizing, texturing, stamping, and cutting shapes.

Personalize



160 Tiles in Set (letters, numbers, blanks, and symbols) and Holder.

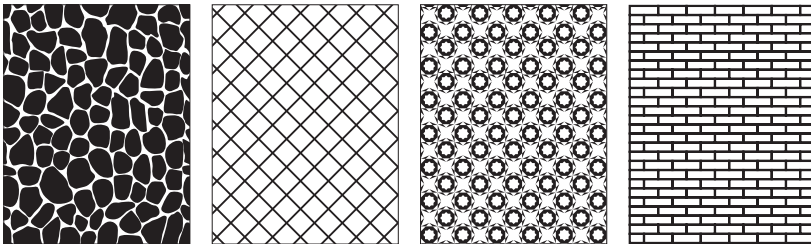
You may choose to show your personalization either horizontally or vertically. The spacing of the Tiles, and the way in which they slide into the Holder, makes this possible.

Assemble the letters, numbers, and symbols you want to use. Slide onto Holder.

Note: Be careful when placing Tiles in Holder. To assure Tiles are in correct position, practice on a piece of scrap clay before using on project.

Use the Holder with both hands directly above the smooth piece of clay. Press down onto the clay. Lift Holder up to reveal the personalization. You may also use the letters, numbers, and symbols individually by holding with your fingers to press onto the clay.

Texture



Use your hands, rolling pin, or pasta machine to press the texture sheet onto the smooth clay.

Stamp



All of the Points are threaded and designed to be screwed into the end of the Tool. You may use pliers to change the Points and tighten them on the Handle. Attach interchangeable Stamps onto both ends of the Handle. Press Stamp onto the clay to create an image.

Cut



Press cutter shapes into the clay. Release the clay and add shapes to projects before or after baking.

All Embossing items included produce great results and are easy to use. If necessary, clean items with a damp cloth, or soap and water.

Note:

Dust cornstarch on Alphabet, Numbers and Symbols, Texture Sheets, Stamps, and Cutters to help make embossing easier. Items will release and reveal better personalizing, texture, images, and shapes.